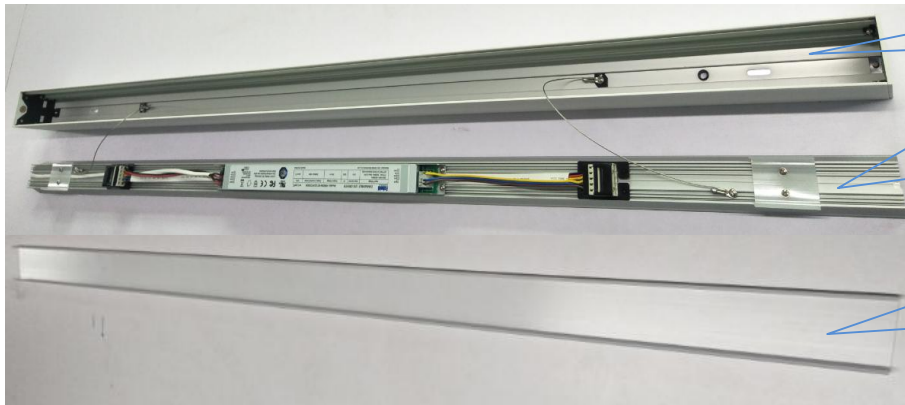


## 1. Components



Main profile

Light source holder (carrier)

PC cover (Diffuser)

Carrier uninstall tool

Diffuser uninstall sucker

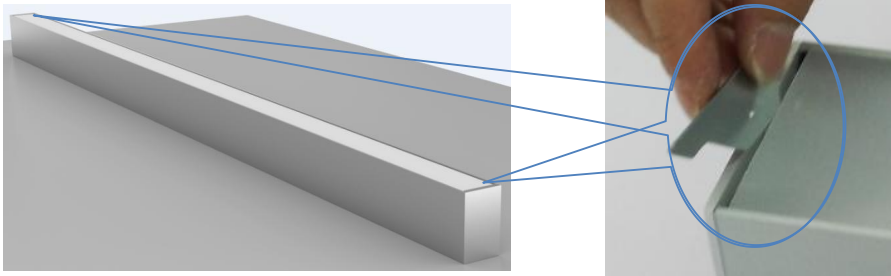


AC Input cable

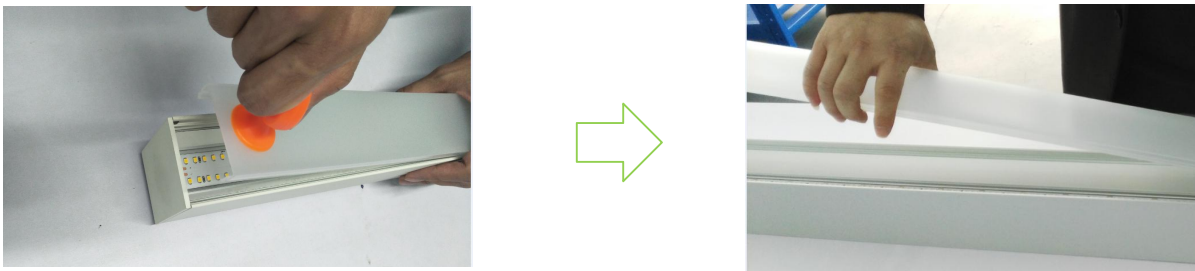
## 2. Installation

### A. Installation of single lighting fixture

#### A1. Take out anti-lightleak clips



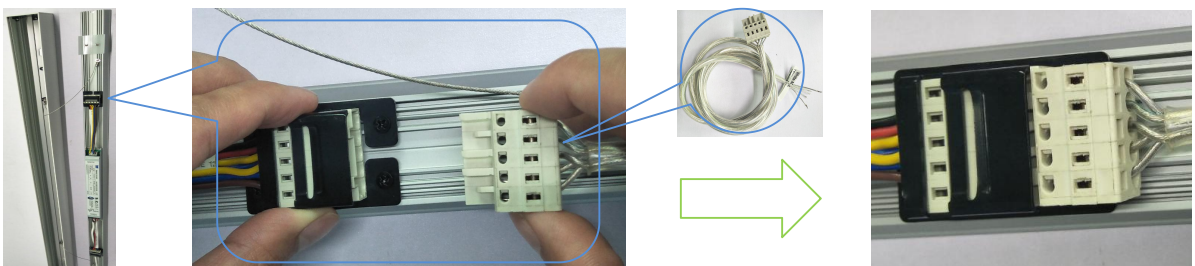
#### A2. Push sucker on diffuser, then pull up



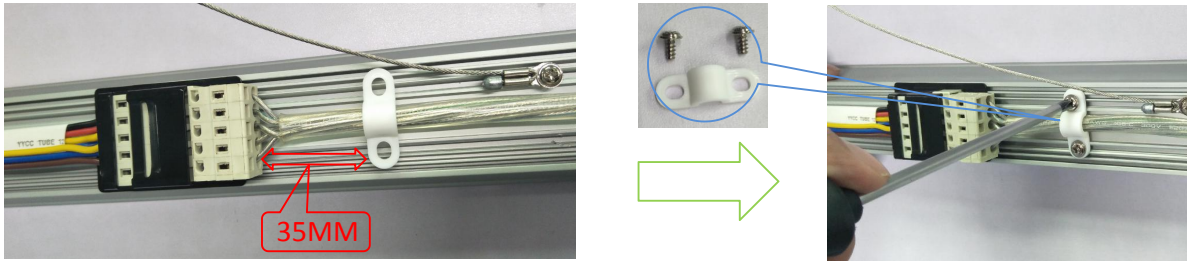
#### A3. Put carrier uninstallation tool into right position inside of carrier, then pull up



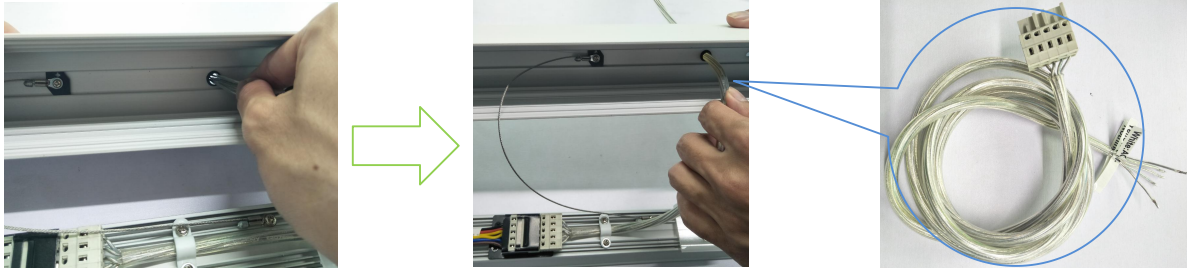
#### A4. Connect male-connector to female connector on carrier



A5. Fixed AC input cable



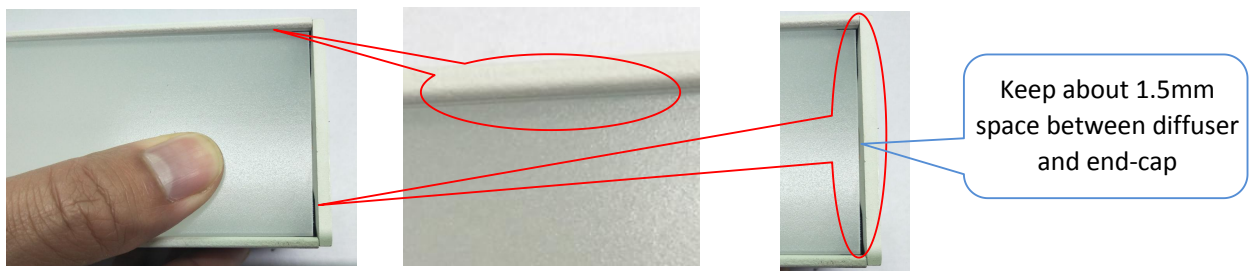
A6. Pass AC input cable through the hole on main profile



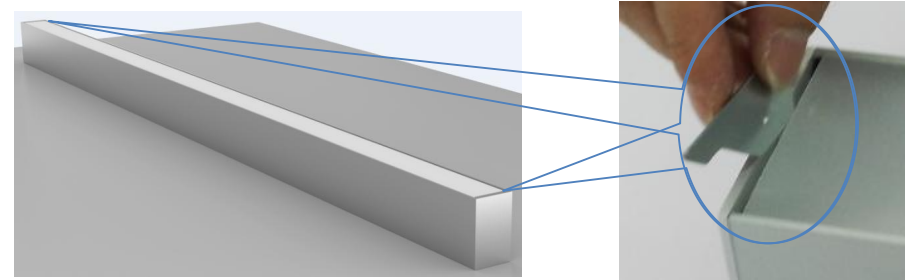
A7. Put one side of carrier on right position inside of main profile, then press carrier



A8. Install diffuser



A9. Put anti-lightlead clips in the space between diffuser and end-cap



A10. Finish

